

Camp Mabry is 368 acres situated on a significant transition zone that existed historically as the interface between the wooded hills and canyons of the Edward’s Plateau and the grasslands of the Blackland Prairies. Camp Mabry is now typical of an urban-wildland interface where the wooded hillsides merge into Austin’s urban landscape. The historical and current transition zones greatly influence the natural diversity of Camp Mabry (and Austin in general) with a mix of western and eastern species, more dominated by the latter, and a mix of wildland and urban species. Camp Mabry is also notably influenced by the Central Flyway, a significant corridor for seasonal streams of migrant birds traveling between southern wintering grounds and northern breeding areas.

Thus far 182 species* of birds have been documented within (or flying over) Camp Mabry. Forty-eight species are known or reasonably suspected to breed at Camp Mabry. Forty species have been documented on only one occasion (▲). Some of these single-record species are either rare, outside their normal range, or passing migrants; all of which require some amount of luck in timing and/or skill to detect. Some require more specific survey methods and some are just harder to detect or identify. Ten species have been documented in greater than half of all survey events, representing year-round residents that are more widespread and generalist in habit and/or more easily detected/identified. These are White-winged Dove, Red-bellied Woodpecker, Blue Jay, American Crow, Carolina Chickadee, Black-crested/Tufted Titmouse*, Carolina Wren, Northern Mockingbird, Northern Cardinal, and House Finch. Other highly detectable species are more seasonal (i.e., migratory) as shown below.

This seasonal distribution checklist was developed using documented records of birds within the boundaries of Camp Mabry. These records have been gathered by employees and contracted surveyors through formal survey methods, casual to intensive birding walks, and general sight records. Since the following tables were developed using observation data the values are influenced by a number of effects, including, but not limited to observer effort within a period (months are used below), variable detectability of a species within a season or habitat, and survey location (e.g., habitat). The Travis Audubon Society has an excellent reference for regional likelihood of occurrence entitled “Birds of the Austin, Texas, Region,” an invaluable reference when birding in the area.

Two species on this list are ranked as threatened or endangered at the federal and/or state level. Both are encountered as migrants. The Peregrine Falcon (state-listed threatened, ST) is primarily expected as a flyover. The Golden-cheeked Warbler (federally-listed endangered, FE) moves through on the way to breeding habitat nearby in the wooded slopes of the Balcones Canyonlands.

*Black-crested and Tufted Titmouse have been treated as one species below due to the complexity of hybridization in this area.

----- LEGEND -----		Seasonal Status					
Breeding Status (B)		Abundant	Common	Fairly Common	Regular	Occasional	Single Record
Confirmed or highly suspected	X	████████		-----	-----	-----	▲
Suspected Breeder	\						
		Abundant: Recorded on >80% of checklists					
		Common: Recorded on 60-80% of checklists					
		Fairly Common: Recorded on 40-60% of checklists					
		Regular: Recorded on 20-40% of checklists					
		Occasional: Recorded on >0-20% of Checklists					
		Single Record: Species has been recorded on only a single occasion					

Seasonal Distribution of Birds at Camp Mabry

SPECIES	B	JAN	FEB	MAR	APR	MAY	JUN	JUL	AUG	SEP	OCT	NOV	DEC
Black-bellied Whistling-Duck					▲								
Wood Duck	X	- - -	-----	=====	=====	=====	- - -	-----		-----	-----	-----	-----
Gadwall		-----	-----	- - -							- - -		
American Wigeon			▲										
Mallard							▲						
Blue-winged Teal				- - -		- - -				- - -	- - -		
Northern Shoveler			▲										
Green-winged Teal										- - -	- - -		
Red-crested Pochard			- - -	- - -									
Ring-necked Duck		- - -	-----	-----								- - -	- - -
Lesser Scaup		- - -	- - -	-----									
Bufflehead			- - -										
Wild Turkey				- - -	- - -	- - -							
Pied-billed Grebe		-----	- - -	-----			- - -			- - -	- - -	- - -	-----
Double-crested Cormorant		- - -	-----	-----	- - -		- - -				- - -		
Great Blue Heron	\	- - -	-----	-----	-----	-----	- - -	- - -	-----	-----	-----	-----	- - -
Great Egret		-----	-----	- - -	- - -	- - -			- - -	- - -		- - -	-----
Snowy Egret		- - -	- - -	- - -					- - -	- - -			- - -
Cattle Egret					▲								
Green Heron	X			- - -	-----	-----	=====	=====	=====	-----			
Black-crowned Night-Heron									▲				
Yellow-crowned Night-Heron					- - -	- - -							
White-faced Ibis										▲			
Black Vulture	\	- - -	- - -	- - -	-----	-----	- - -	-----		- - -	-----	-----	- - -
Turkey Vulture	\	-----	-----	=====	=====	=====	=====	=====	=====	=====	=====	=====	-----
Osprey				- - -							- - -		
White-tailed Kite					▲								
Mississippi Kite					▲								
Northern Harrier											▲		
Sharp-shinned Hawk		- - -	- - -	- - -							- - -	- - -	- - -
Cooper's Hawk	X	- - -	-----	-----	- - -	- - -				- - -	-----	- - -	-----
Northern Goshawk			▲										
Red-shouldered Hawk	X	- - -	- - -	=====	=====	=====	-----	- - -	-----	=====	=====	-----	-----
Broad-winged Hawk		- - -			- - -	- - -					- - -	- - -	
Swainson's Hawk					- - -						- - -		
Red-tailed Hawk	X	-----	- - -	- - -	=====	-----	- - -	- - -	-----	- - -	-----	-----	-----
American Kestrel		- - -	- - -	- - -						- - -	- - -	- - -	-----
Merlin			- - -										- - -
Peregrine Falcon (ST)			- - -		- - -					- - -	- - -	- - -	
Sandhill Crane		- - -		- - -							- - -		
Killdeer	X	- - -	- - -	-----	- - -	- - -	- - -		-----	-----	- - -	-----	- - -
Spotted Sandpiper						- - -			-----	- - -			
Solitary Sandpiper						- - -							
Lesser Yellowlegs						- - -			- - -				
Upland Sandpiper					- - -				-----				
Long-billed Curlew									▲				
Franklin's Gull					- - -								
Ring-billed Gull		- - -	- - -	- - -		- - -							
Herring Gull													▲

Seasonal Distribution of Birds at Camp Mabry

SPECIES	B	JAN	FEB	MAR	APR	MAY	JUN	JUL	AUG	SEP	OCT	NOV	DEC
Rock Pigeon	X			- - -	- - -	- - -	- - -						
White-winged Dove	X	=====	-----	====	=====	=====	====	=====	=====	====	====	====	====
Mourning Dove	X	- - -	-----	====	====	====	====	=====	====	-----	-----	- - -	=====
Monk Parakeet					- - -						- - -	- - -	
Yellow-billed Cuckoo					- - -	=====	=====	- - -	- - -				
Eastern Screech-Owl	X	- - -				- - -		- - -		- - -		- - -	
Great Horned Owl	X	- - -				- - -			- - -				
Barred Owl	\	- - -				- - -						- - -	- - -
Common Nighthawk							- - -			- - -			
Chuck-will's-widow	\									▲			
Eastern Whip-poor-will											▲		
Chimney Swift	\				=====	=====	=====	====	====	====	-----		
Ruby-throated Hummingbird									- - -	- - -			
Black-chinned Hummingbird	X			- - -	- - -	-----	-----	- - -					
Selasphorus sp.								- - -	- - -	-----			
Belted Kingfisher		-----	- - -	- - -	- - -		- - -	- - -	- - -	- - -	- - -	- - -	- - -
Red-bellied Woodpecker	X	=====	=====	====	====	=====	=====	=====	=====	=====	====	=====	=====
Yellow-bellied Sapsucker		- - -											- - -
Ladder-backed Woodpecker				- - -	- - -		- - -	- - -	- - -	- - -	- - -	- - -	
Downy Woodpecker	X	-----	- - -	-----	- - -	=====	=====	=====	====	====	-----	- - -	-----
Northern Flicker		- - -	- - -	- - -							-----	-----	-----
Pileated Woodpecker				- - -								- - -	
Olive-sided Flycatcher						- - -							
Eastern Wood-Pewee						-----	- - -		- - -	- - -			
Yellow-bellied Flycatcher									- - -	- - -			
Acadian Flycatcher						-----	- - -	- - -					
Alder Flycatcher						▲							
"Traill's" Flycatcher						▲							
Least Flycatcher					- - -	- - -		- - -	-----	-----			
Empidonax sp.						- - -				- - -			
Eastern Phoebe	X	=====	-----	=====	- - -	-----	-----	- - -	-----	-----	=====	=====	=====
Great Crested Flycatcher	X				- - -	=====	-----	-----	- - -	- - -			
Couch's Kingbird					▲								
Western Kingbird	X				-----	====	=====	=====	-----				
Eastern Kingbird					- - -	- - -				- - -			
Scissor-tailed Flycatcher	\			- - -	-----	- - -	-----	- - -	- - -				
Loggerhead Shrike	X	- - -	- - -	- - -		- - -	- - -	- - -	- - -	- - -	- - -		- - -
White-eyed Vireo	X			=====	====	=====	=====	=====	====	====	- - -		
Bell's Vireo									▲				
Yellow-throated Vireo					▲								
Blue-headed Vireo		- - -	- - -	- - -	- - -	- - -						- - -	-----
Warbling Vireo										- - -			
Philadelphia Vireo					- - -					- - -			
Red-eyed Vireo					- - -	- - -	- - -						
Blue Jay	X	====	====	=====	=====	=====	====	=====	=====	=====	=====	====	====
American Crow	X	-----	=====	====	====	=====	====	-----	-----	====	-----	-----	-----
Northern Rough-winged Swallow			- - -		- - -				- - -		- - -		
Purple Martin	X		- - -	=====	====	====	=====	====	- - -				
Barn Swallow	X			- - -	-----	=====	=====	- - -	=====	- - -	- - -		

Seasonal Distribution of Birds at Camp Mabry

SPECIES	B	JAN	FEB	MAR	APR	MAY	JUN	JUL	AUG	SEP	OCT	NOV	DEC
Cliff Swallow	\				- - -	-----	- - -	- - -	- - -	- - -	- - -		
Cave Swallow	\				- - -	-----	- - -	-----	- - -	- - -	- - -		
Carolina Chickadee	X	=====	=====	=====	=====	=====	=====	=====	=====	=====	=====	=====	=====
Tufted/Black-crested Titmouse	X	=====	=====	=====	=====	=====	=====	=====	=====	=====	=====	=====	=====
Brown Creeper		- - -		- - -									
Canyon Wren								- - -			- - -		
Carolina Wren	X	=====	=====	=====	=====	=====	=====	=====	=====	=====	=====	=====	=====
Bewick's Wren	X	-----	-----	-----	=====	=====	=====	-----	-----	-----	- - -	- - -	- - -
House Wren		- - -	- - -	- - -	- - -	- - -				- - -	- - -	- - -	- - -
Winter Wren		- - -		- - -								- - -	
Sedge Wren											▲		
Blue-gray Gnatcatcher	\		- - -	-----	=====	-----	- - -	- - -	-----	=====	- - -		- - -
Golden-crowned Kinglet		- - -	- - -	- - -							- - -		- - -
Ruby-crowned Kinglet		=====	=====	=====	-----	- - -					-----	=====	=====
Swainson's Thrush					▲								
Hermit Thrush		- - -										- - -	- - -
Wood Thrush					▲								
American Robin		- - -	- - -	- - -		- - -	- - -		- - -	- - -		-----	- - -
Gray Catbird						▲							
Northern Mockingbird	X	=====	=====	=====	=====	=====	=====	=====	=====	=====	=====	=====	=====
European Starling	X	- - -	- - -	-----	=====	=====	-----	=====	-----	-----	=====	- - -	-----
American Pipit				▲									
Cedar Waxwing		-----	-----	=====	-----	-----	- - -						- - -
Louisiana Waterthrush								- - -	- - -				
Northern Waterthrush						- - -		- - -	- - -				
Black-and-white Warbler	\				- - -			- - -		- - -	- - -		
Prothonotary Warbler							▲						
Tennessee Warbler						▲							
Orange-crowned Warbler		- - -	- - -	- - -	- - -						- - -	-----	-----
Nashville Warbler				- - -	=====	- - -	- - -			- - -	- - -	- - -	
Mourning Warbler			- - -			- - -		- - -	- - -				
Common Yellowthroat						-----	- - -			- - -			
American Redstart						- - -				- - -			
Cerulean Warbler						▲							
Northern Parula				▲									
Magnolia Warbler											▲		
Bay-breasted Warbler						▲							
Blackburnian Warbler						- - -	- - -						
Yellow Warbler					- - -	=====	- - -		-----	-----			- - -
Pine Warbler				▲									
Yellow-rumped Warbler		=====	=====	=====	=====	- - -				- - -	-----	=====	=====
Golden-cheeked Warbler (FE)				- - -									
Black-throated Green Warbler			- - -		- - -	- - -				- - -	- - -	- - -	
Canada Warbler										▲			
Wilson's Warbler						- - -	- - -		- - -	-----			
Yellow-breasted Chat					- - -	- - -							
Spotted Towhee		-----	- - -	- - -	- - -							- - -	-----
Eastern Towhee		▲											
Canyon Towhee												▲	

Seasonal Distribution of Birds at Camp Mabry

SPECIES	B	JAN	FEB	MAR	APR	MAY	JUN	JUL	AUG	SEP	OCT	NOV	DEC
Cassin's Sparrow											▲		
Chipping Sparrow		-----	- - -	- - -	-----	- - -					- - -	-----	- - -
Clay-colored Sparrow					-----	- - -				- - -			
Brewer's Sparrow												▲	
Field Sparrow		- - -		- - -								-----	-----
Vesper Sparrow		- - -	- - -	- - -	- - -	- - -					- - -	- - -	- - -
Lark Sparrow				- - -	-----	- - -				- - -			
Savannah Sparrow		-----	- - -	- - -	- - -	- - -					- - -	- - -	-----
Grasshopper Sparrow		- - -			- - -	- - -							- - -
Le Conte's Sparrow		- - -											- - -
Fox Sparrow												- - -	
Song Sparrow		- - -	- - -	- - -	- - -		- - -					- - -	-----
Lincoln's Sparrow		-----	- - -	-----	-----	- - -						-----	-----
Swamp Sparrow				▲									
White-throated Sparrow		- - -		- - -	- - -	- - -						-----	-----
Harris's Sparrow		- - -		- - -									- - -
White-crowned Sparrow				- - -									- - -
Dark-eyed Junco		- - -	- - -	- - -								- - -	- - -
Summer Tanager	\				- - -	-----	- - -						
Northern Cardinal	X	██████	≡≡≡	██████	██████	██████	██████	██████	██████	██████	≡≡≡	≡≡≡	██████
Rose-breasted Grosbeak					- - -	- - -							
Blue Grosbeak					- - -	- - -			- - -	- - -			
Indigo Bunting					- - -	- - -				- - -	- - -		
Painted Bunting	\				- - -	- - -	- - -	- - -					
Dickcissel					- - -	- - -			-----	-----			
Red-winged Blackbird		- - -	- - -	- - -	-----					- - -		- - -	- - -
Eastern Meadowlark				- - -	- - -						- - -	- - -	
Western Meadowlark												▲	
Common Grackle				- - -	- - -		- - -			- - -	-----	- - -	- - -
Great-tailed Grackle	X	- - -	- - -	-----	≡≡≡	██████	≡≡≡	≡≡≡	- - -	-----	- - -	-----	-----
Brown-headed Cowbird	\			- - -	- - -	- - -	- - -	-----		- - -	- - -		
Bronzed Cowbird						▲							
Orchard Oriole						- - -		- - -	- - -				
Baltimore Oriole						- - -				- - -			
House Finch	X	-----	≡≡≡	≡≡≡	≡≡≡	≡≡≡	≡≡≡	██████	██████	██████	≡≡≡	-----	-----
Pine Siskin										- - -			- - -
Lesser Goldfinch	X	-----	-----	-----	-----	≡≡≡	≡≡≡	-----	-----	-----	- - -	-----	-----
American Goldfinch		- - -	- - -	- - -	- - -							-----	- - -
House Sparrow	X	- - -	- - -	- - -	-----	≡≡≡	-----	≡≡≡			- - -	-----	

----- LEGEND -----		Seasonal Status					
Breeding Status (B)		Abundant	Common	Fairly Common	Regular	Occasional	Single Record
Confirmed or highly suspected	X	██████████	=====		-----	▲
Suspected Breeder	\						
		Abundant: Recorded on >80% of checklists					
		Common: Recorded on 60-80% checklists					
		Fairly Common: Recorded on 40-60% of checklists					
		Regular: Recorded on 20-40% of checklists					
		Occasional: Recorded on >0-20% of Checklists					
		Single Record: Species has been recorded on only a single occasion					

Seasonal Distribution of Birds at Camp Mabry

Version 2 - September 14, 2011

References

The vast majority of observations were recorded by J. McCumber⁴ and Matthews and Abbott². Additional observations were recorded by Farquhar, Maresh, et al¹; J. Bauchman⁴, C. Britt⁴, T. Colvin⁴, K. Crosthwaite⁴, G. Eaton⁴, and D. Johnson⁴. Finally, a single record comes from Selander and Webster³. All data is stored in the vertebrate observation database managed by the Texas Military Forces Natural Resources Program.

- ¹ Farquhar, C.C., J. Maresh, et al. 1996. Biological Inventory of Texas Army National Guard Training Areas. Austin, TX, Resource Protection Divison, Texas Parks and Wildlife Department: 605 pgs.
Austin, TX, University of Texas at Austin: 28 pgs.
- ² Matthews, J.H., and J.C. Abbott. 2005. Bird species survey report for Camp Mabry, Austin, Texas.
- ³ Selander, R.K., and F.S. Webster. 1963. Distribution of the Bronzed Cowbird in Texas. The Condor 65(3): 245-246.
- ⁴ Texas Adjutant General's Department / Texas Military Forces Natural Resources Program (JFTX-EV)
Unpublished field data

Front cover illustration by Jake McCumber

Reports of rare or interesting birds are requested at jacob.mccumber@us.army.mil or phone 512-782-5315.

Observers are encouraged to submit observations to eBird (www.ebird.org) using the Camp Mabry hotspot.

Major birding areas of Camp Mabry

A. Lower Pond: best primary birding location and largest body of water on-site with adjacent woods and grass field – best spot for waders, waterfowl, sparrows, flycatchers, warblers, migrants, etc.

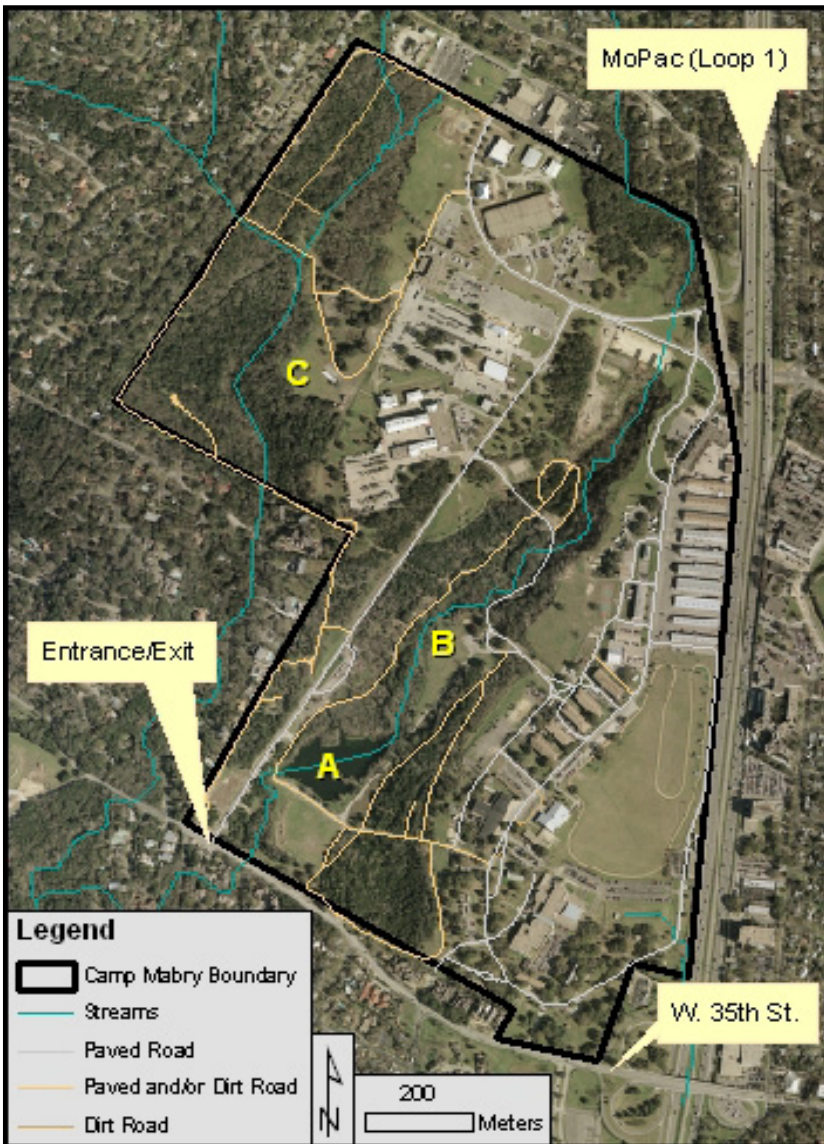
B. Upper Pond: much smaller pond than A, but surrounded by wooded slopes and managed lawn with picnic area – good area for raptors, sparrows, flycatchers, etc.

C. Back 40: largest area of dense woods on-site – good area for woodland sparrows, woodpeckers, goldfinches, owls, raptors, etc.

Traveling around and between points A and B generally provides the best birding at Camp Mabry and allows one to cover a variety of representative habitats.

Most areas, including woodlands, at Camp Mabry have dirt roads running through them providing easy birding access and foot travel between locations. Please stay on the trails.

Please remember this is an active military headquarters. Use respect and good judgment when choosing locations and while you are birding.



**Texas Adjutant General’s Department
Natural Resources Program**

